



luxra[®]

**PURE
ENERGY**



LOW REFLECTON and HIGH TRANSMITTANCE

Suitable for applications with severe Glare requirements (e.g. next to roads or airports and residential complexes), maximum transparency of 35%.



HIGHEST PERFORMANCE

Excellent N-type TOPCon bifacial cell efficiency for output up to maximum performance of 300 Wp available.



LIGHT WEIGHT

Low module weight with double glass for maximum high static load on front side and high hail resistance.



DESIGN AND SECURITY

Transparent design, optional with elegant black framework, together with double glass for technical security. Reliable for your free clean energy.

AGRICULTURAL AND SOLARPARKING

LUXRA[®] PURE HARVEST MODULE LX-300N

THE POWERFUL AND RELIABLE SOLAR MODULE FOR AGRI-PV SOLUTIONS



Inherent defect coverage
for certified panels with
inline-quality inspection



Performance Guarantee
30 years linear power
output warranty



Product Warranty
30 years limited warranty on
product quality

15.01%

MODULE
EFFICIENCY

0-3%

POWER
TOLERANCE

<2%

FIRST YEAR
POWER DEGRADATION

0.4%

YEAR 2-30
POWER DEGRADATIONINNOVATION SMBB
& HALF CUT CELLS

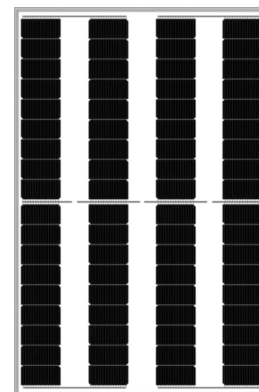
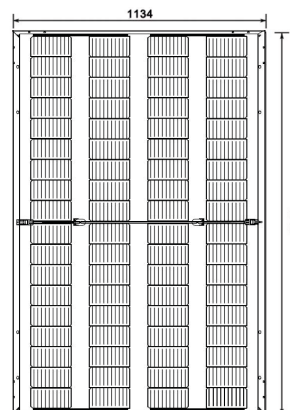
LOWER OPERATION TEMPERATURE

ELECTRICAL DATA AT STC*

Peak Power (Pmax)**	(W)	300
Maximum Power Voltage (Vmp)	(V)	22,80
Maximum Power Current (Imp)	(A)	13,16
Open-circuit Voltage (Voc)	(V)	25,83
Short-circuit Current (Isc)	(A)	13,68
Module Efficiency	(%)	15,01
Operating Temperature		- 40° ~ + 85° C
Maximum System Voltage		1500V
Maximum Series Fuse Rating		25A
Power Tolerance		0~+3%

*STC (Standard Test Condition): Irradiance 1000W/ m2, Module Temperature 25° C, AM 1.5

*On request also available in Peak Power modules of 370 W - 390 W in 10 W steps



With frame

ELECTRICAL DATA AT NMOT*

Peak Power (Pmax)	(W)	228
Maximum Power Voltage (Vmp)	(V)	21,71
Maximum Power Current (Imp)	(A)	10,50
Open-circuit Voltage (Voc)	(V)	24,46
Short-circuit Current (Isc)	(A)	11,70

*NMOT (Under Nominal Module Operating Temperature), Irradiance of 800W/ m2, Spectrum AM 1.5,

Ambient Temperature 20°, Wind Speed 1m/s

TEMPERATURE CHARACTERISTICS

Temperature coefficient of Pmax	- 0,29%/k
Temperature coefficient of Voc	- 0,25%/k
Temperature coefficient of Isc	0,04%/k
NMOT	43 ± 2° C

MECHANICAL DATA

Mechanical Test Load	Front - 5400Pa - Rear - 2400Pa
Cell type	Mono-Crystalline N-TYPE TOPCon
Cell Arrangement	72pcs (2(4x9))
Dimensions (LxWxH)	1762 x 1134 x 30 mm 1,99 m²
Weight	21,8 kg
Front Cover	1.6 mm high transmittance, AR coated tempered glass
Back Cover	1.6 mm high transmittance, heat strengthened glass
Frame (optional)	Anodized Aluminium Alloy with Black coating
Junction Box	IP68, 3 Bypass Diodes
Cable Type	4mm²
Length of Cable	1000 mm
Connector	Compatible with MC4 PV Connector

PACKAGING

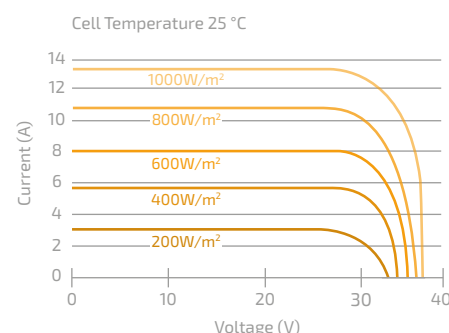
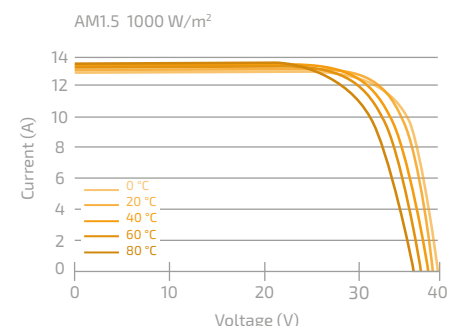
Packing Type	40 ft HQ
Piece/ Pallet	36
Piece/ Container	936 (with frame)

WARRANTY

Product Material & Workmanship	30 years
Linear Performance Warranty	30 years - 87,4%
Linear attenuation per year within 30 years	0,40%

The information contained in these specifications is subject to change without prior notice.
Luxra International B.V. reserves the exclusive right to final interpretation of all content.

IV Curves for Front-Side Illumination of 300 Wp Panel

CURRENT - VOLTAGE CURVE UNDER
DIFFERENT IRRADIANCECURRENT - VOLTAGE CURVE UNDER
DIFFERENT WORKING TEMPERATURES

LINEAR PERFORMANCE WARRANTY

