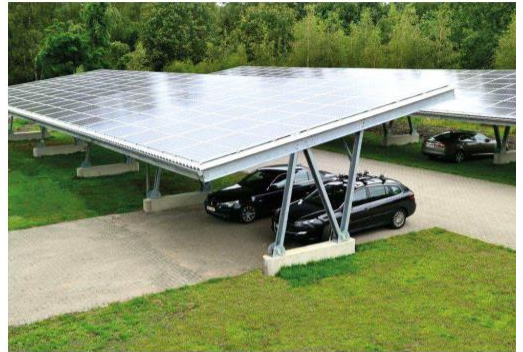


## "The modular carport system for commercial and industrial parking areas"

### Design:

- Single - or double row Car Park (N- or W-frame)
- Bays for 3 parking places
- Parking place : 2,5 x 5 metres
- Clearance height : 2,5 metres
- Tilt angle : 10°
- Fast Slide Roofsystem
- Different lengths possible (modular)
- Foundation (not provided by SadeF): pile driven and reinforced concrete collar (vehicle impact protection)



### Features:

- Valid for framed panels (height 35-50mm)
- Landscape or portrait panel arrangement
- No steeldeck
- No clamps
- Nearly watertight
- Integrated cable management in both directions (purlins/Fast Slide profile)



### Material:

- Foundation piles : hot-dipped galvanized in steel grade S355 MC
- Other profiles: Magnelis (ZM310) in steelgrade S390GD
- Fastenings: Hot Dipped galvanized (grade 8.8) or Stainless Steel (A2)

### Optional:

- Surface treatment (powder coating)
- Anti-Theft system
- Earthing of the modules
- Watertight (not provided by SadeF): rubber strip, steeldeck, gutter and module fixing

## Benefits:

- Quick and easy mounting
- High economic efficiency

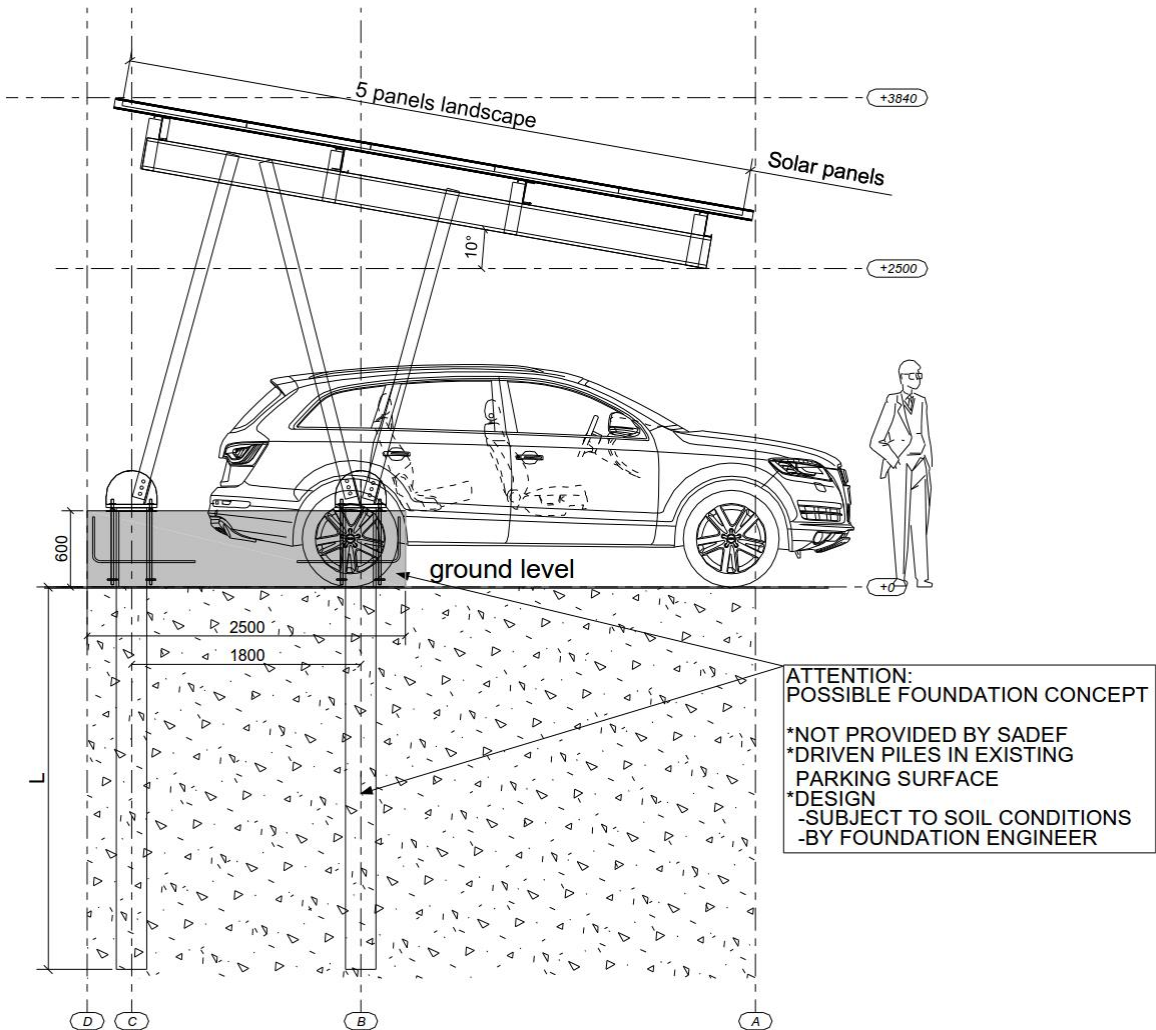
## Structural analysis:

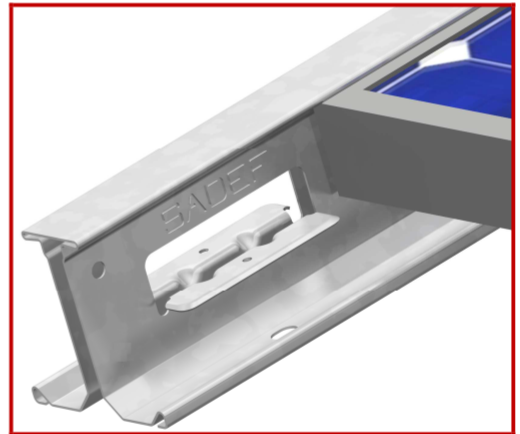
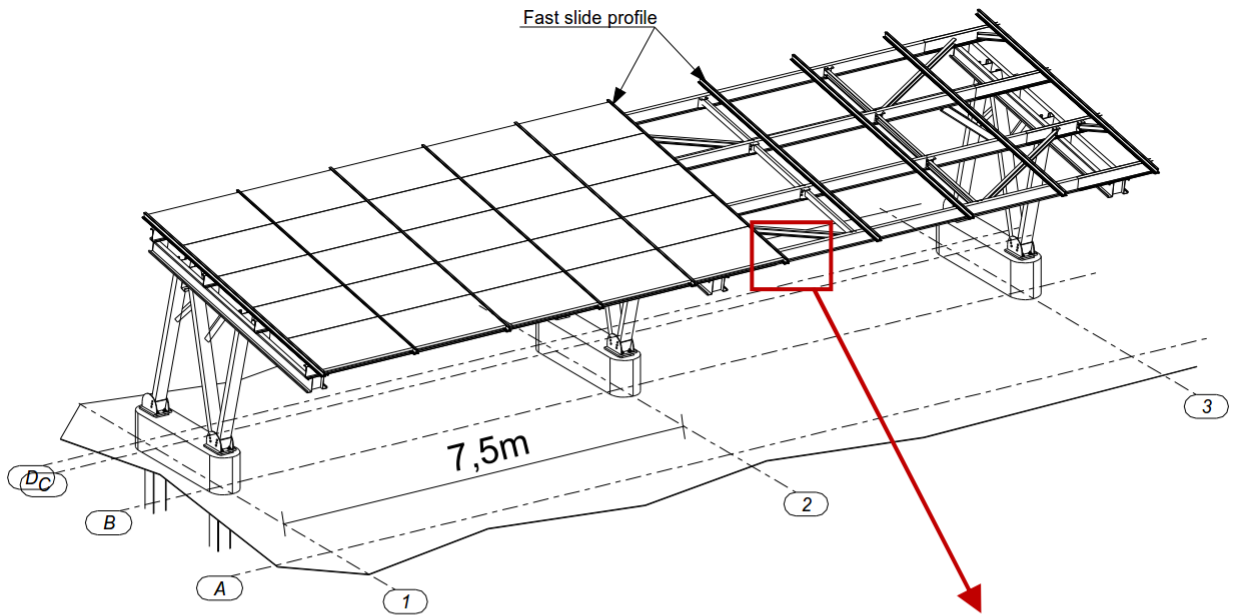
- Structural analysis based upon a geological & topographical survey
- Individual systems analysis based on regional load values
- Load assumptions according to Eurocode and its corresponding national application document
- Structural verification following Eurocode
- Structure design life time: 25 years (unless specified otherwise)
- Highly efficient, material-saving profile geometries



Other clearance on request.

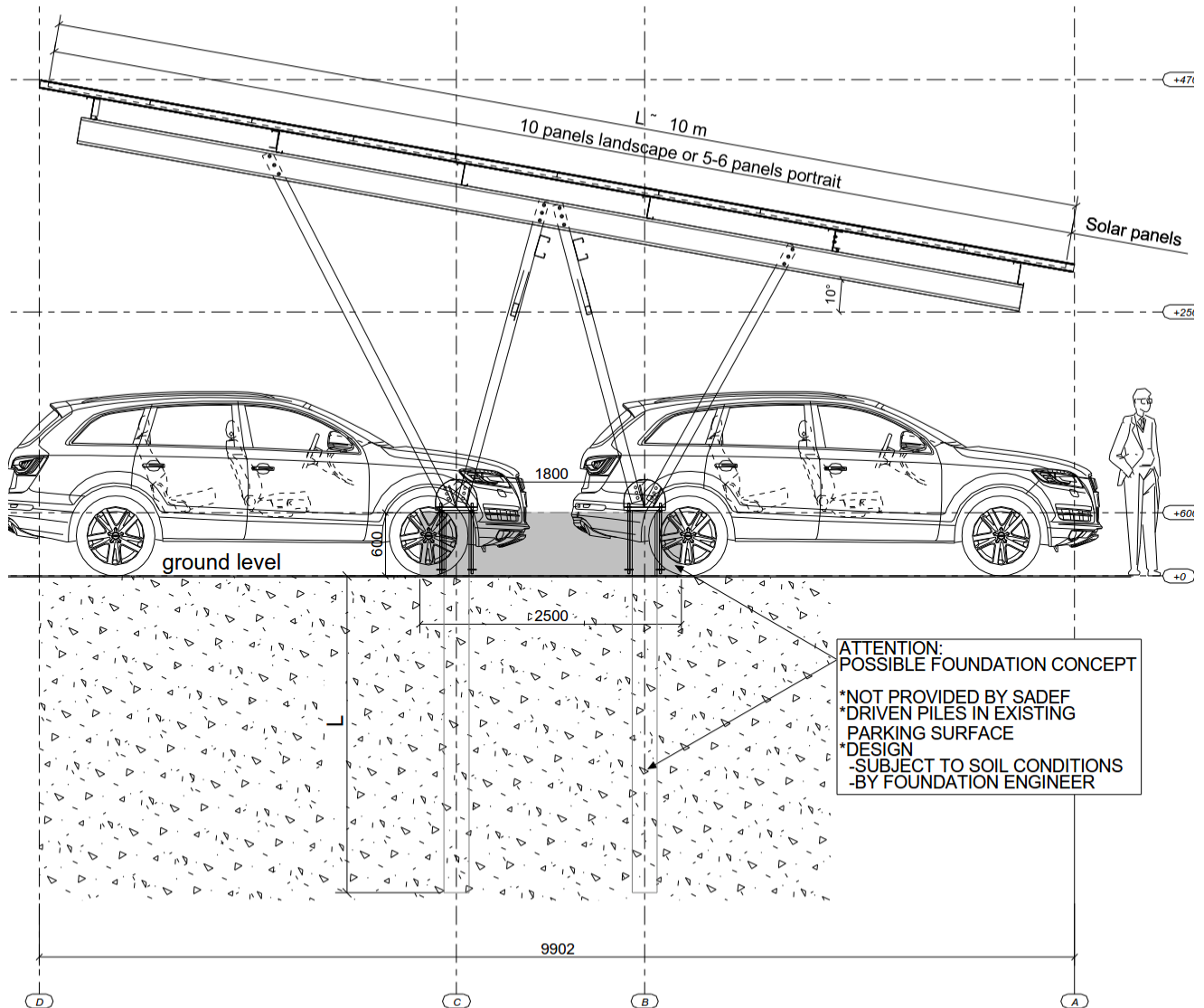
## Single row (N-frame): Section view



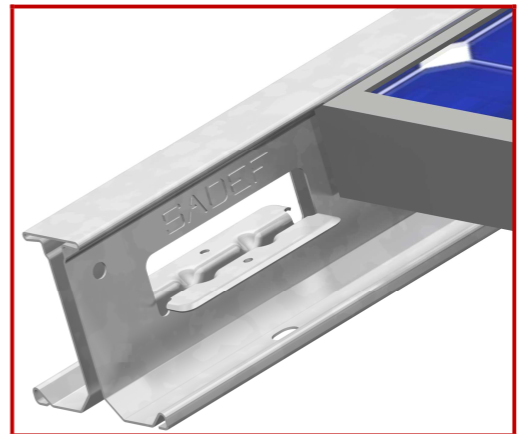
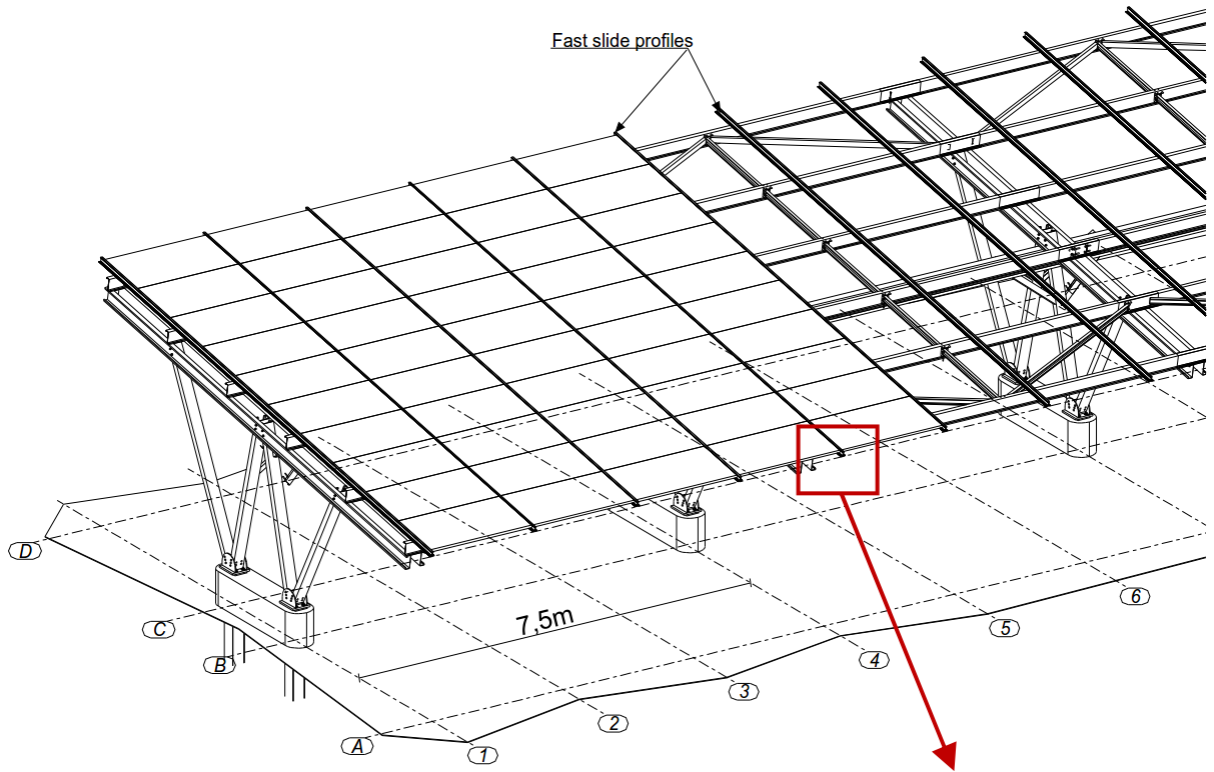


## Double row (W-frame):

### Section view

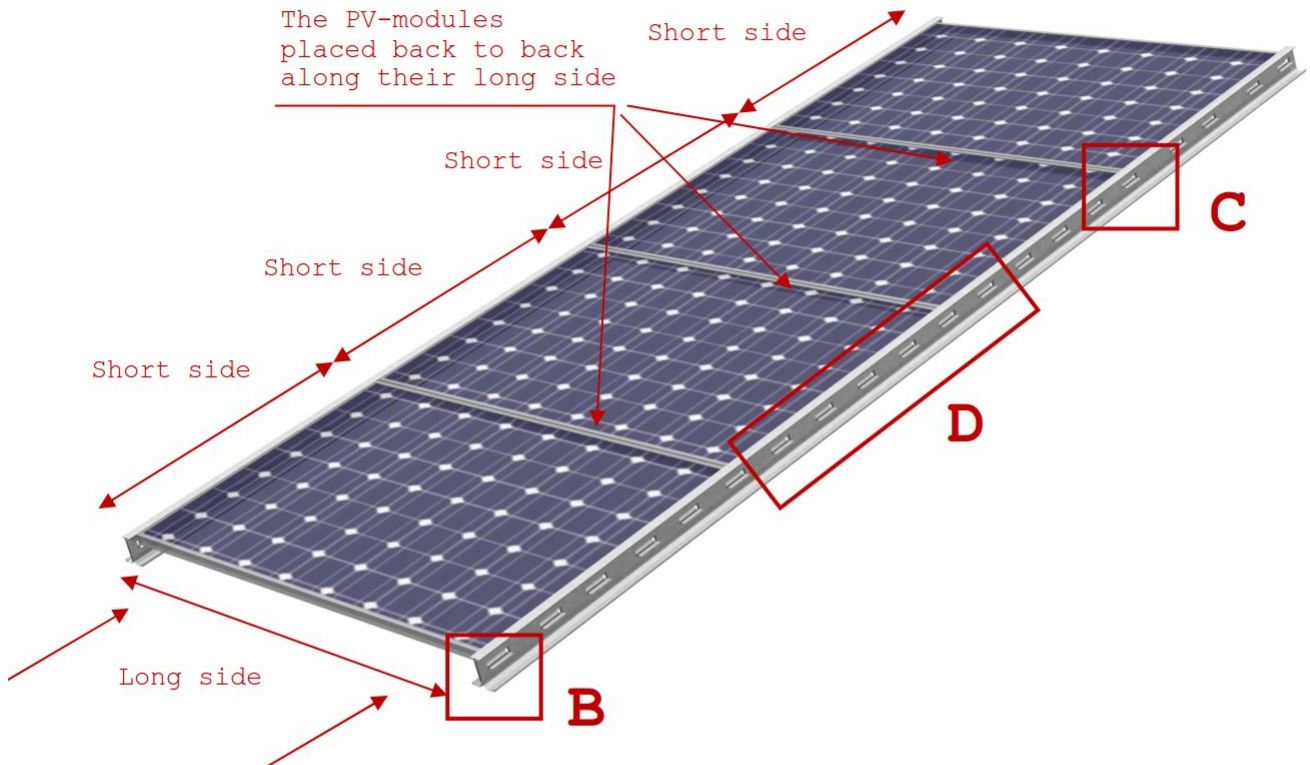


**Landscape with Fast Slide**

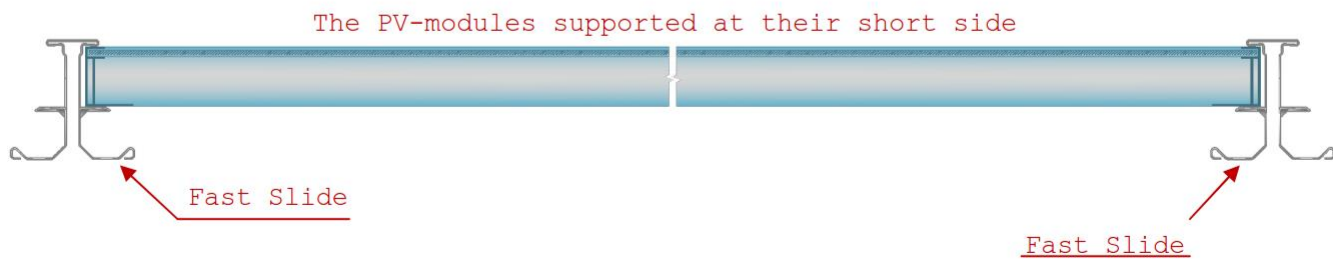


## **GENERAL MOUNTING METHOD OF PV-MODULES (E.G. LANDSCAPE):**

Sliding the PV-modules (from bottom to the top)



### • **SCHEME OF SUPPORTING THE PV-MODULES :**



**Luxra Deutschland GmbH**

Halberstädter Str. 2

D- 10711 Berlin



[www.solarkauf.de](http://www.solarkauf.de)